

Paper Reference(s) 1SC0/2BF
Pearson Edexcel Level 1/Level 2 GCSE
(9–1)

Combined Science
PAPER 4
Foundation Tier

Friday 7 June 2024 – Afternoon

Time: 1 hour 10 minutes

Diagram Booklet

**THIS DIAGRAM BOOKLET MUST BE
RETURNED WITH THE QUESTION PAPER
AT THE END OF THE EXAMINATION.**

**In the boxes below, write your name, centre
number and candidate number.**

Surname					
Other names					
Centre Number					
Candidate Number					

INSTRUCTIONS

There may be spare copies of some diagrams in case you need them.

CONTENTS

Page

4	Question 1
5	Question 1(a)
6	Question 1(b)
7	Question 2(c)
8	Question 3(a)
9	Question 3(d)
10	Question 4
11	Question 4(d)
12	Question 5(b)
13	Question 6(a)

(continued on the next page)

Turn over

CONTENTS continued.

14 Question 6(b)

15 Question 6(c)

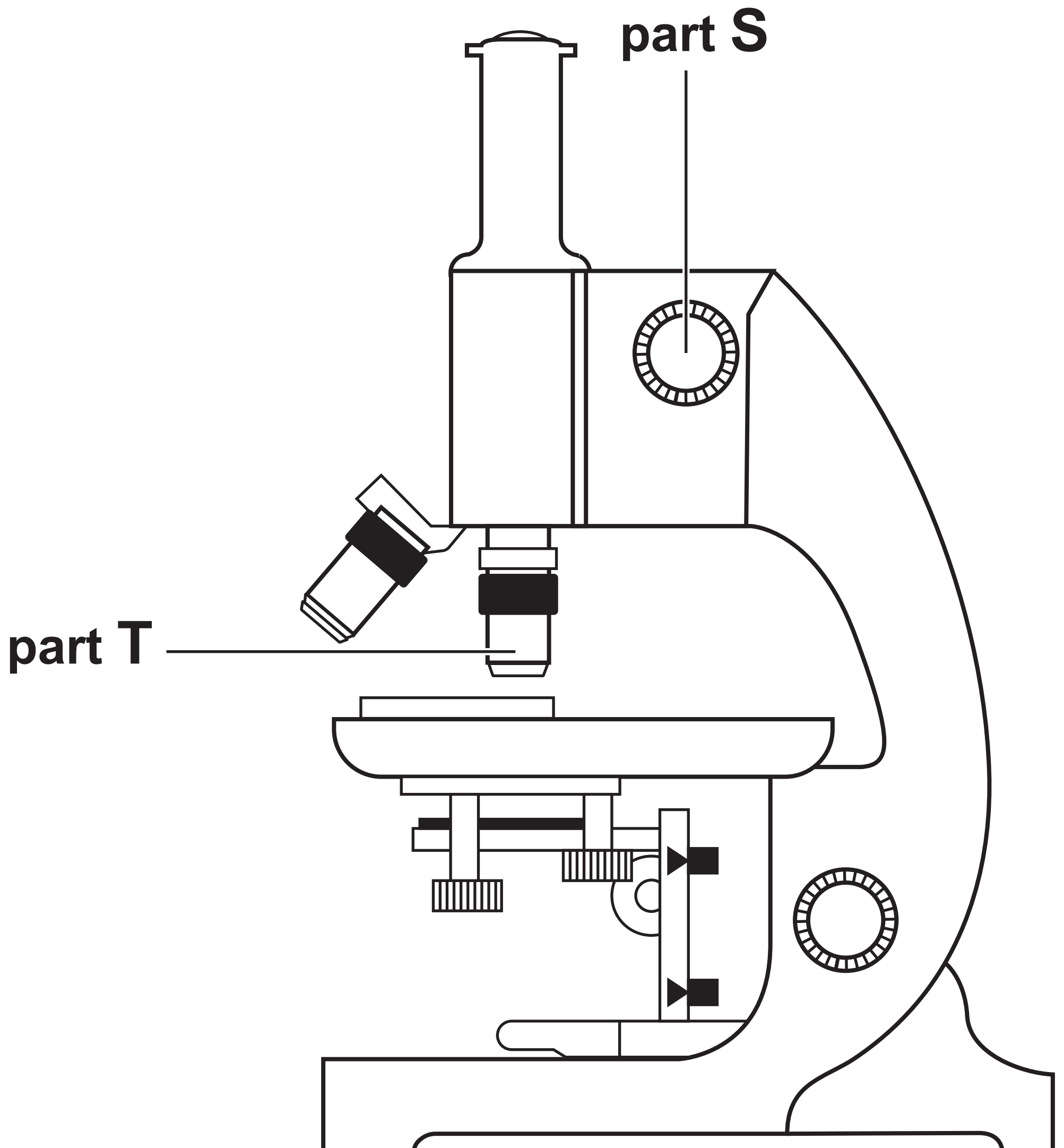
Spare Copies

16 Question 1(a)

17 Question 3(a)

Question 1

FIGURE 1



Question 1(a)

**part of
microscope**

part S

part T

function

- **to stain the cells**

- **to focus the image so
that it is clear**

- **to magnify the image**

- **to hold the slide in place**

- **to provide light to see
the image**

Question 1(b)

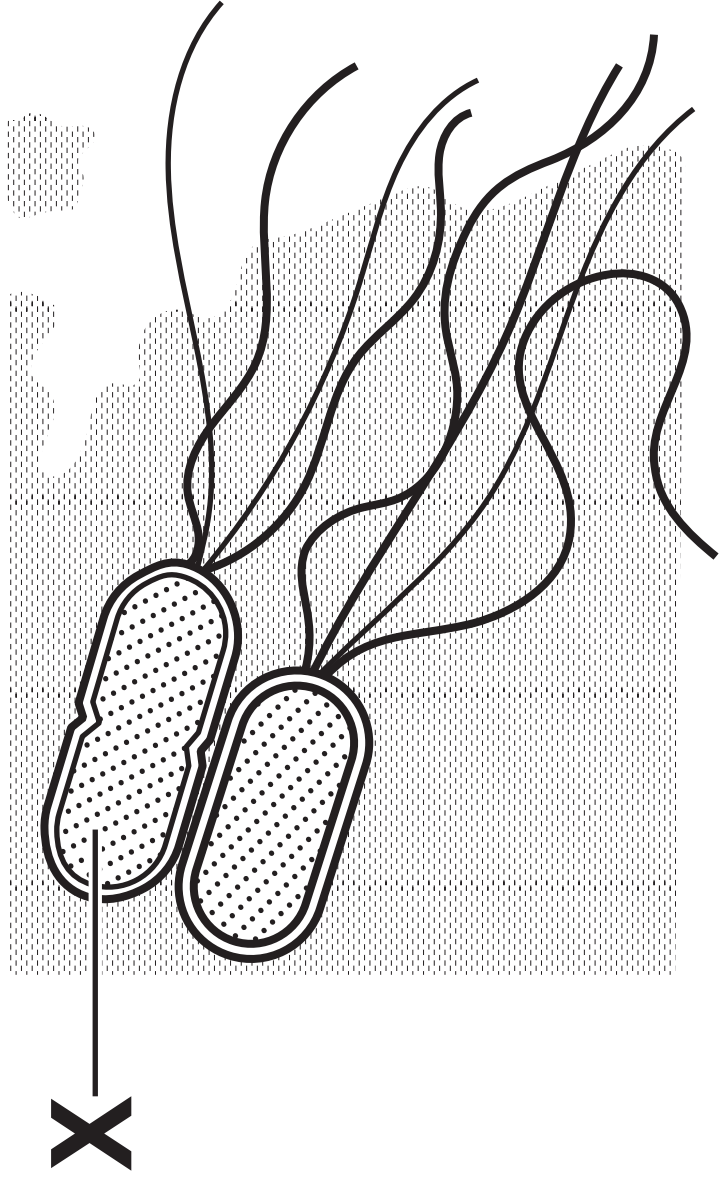
6

FIGURE 2

image A

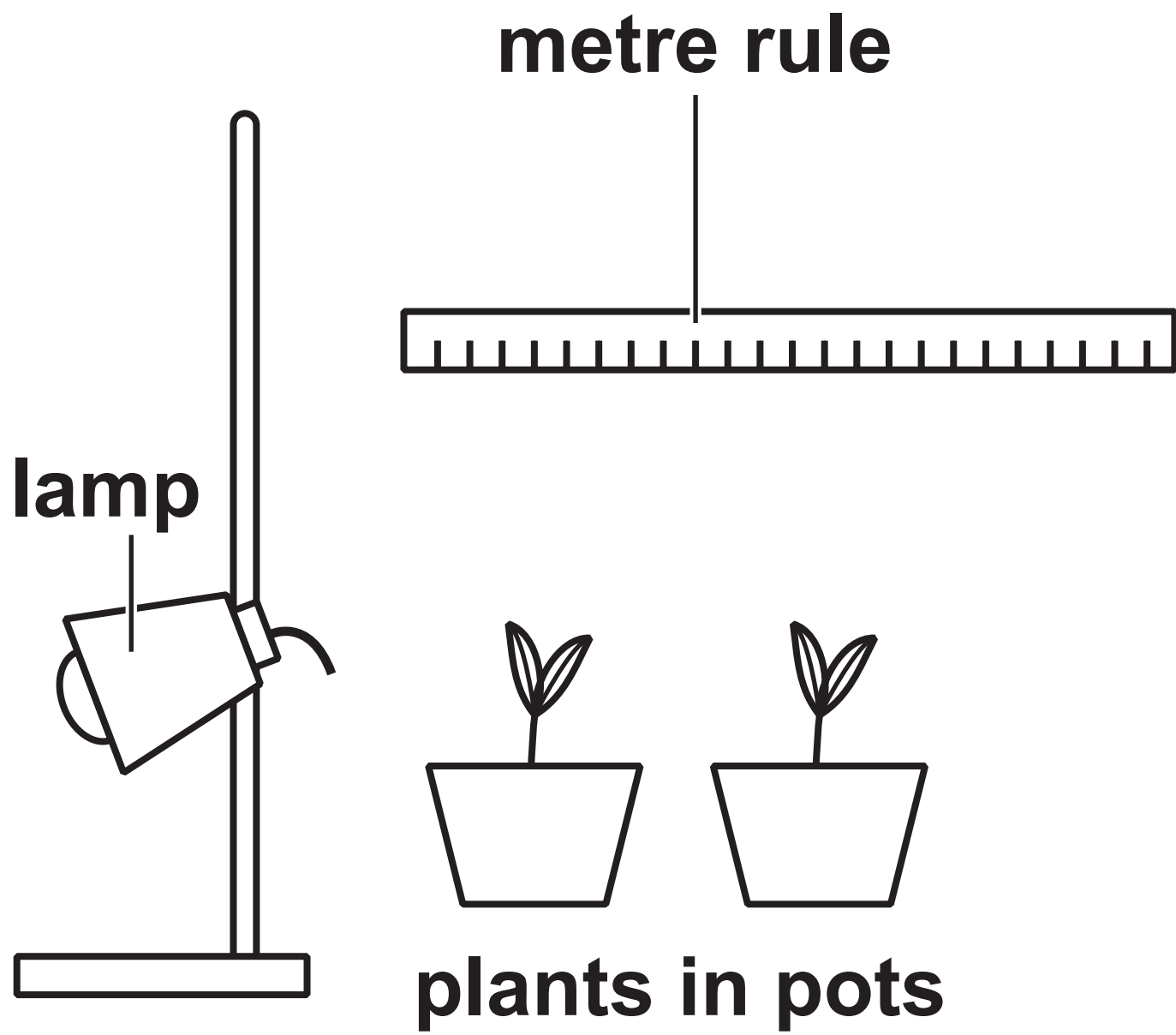


image B



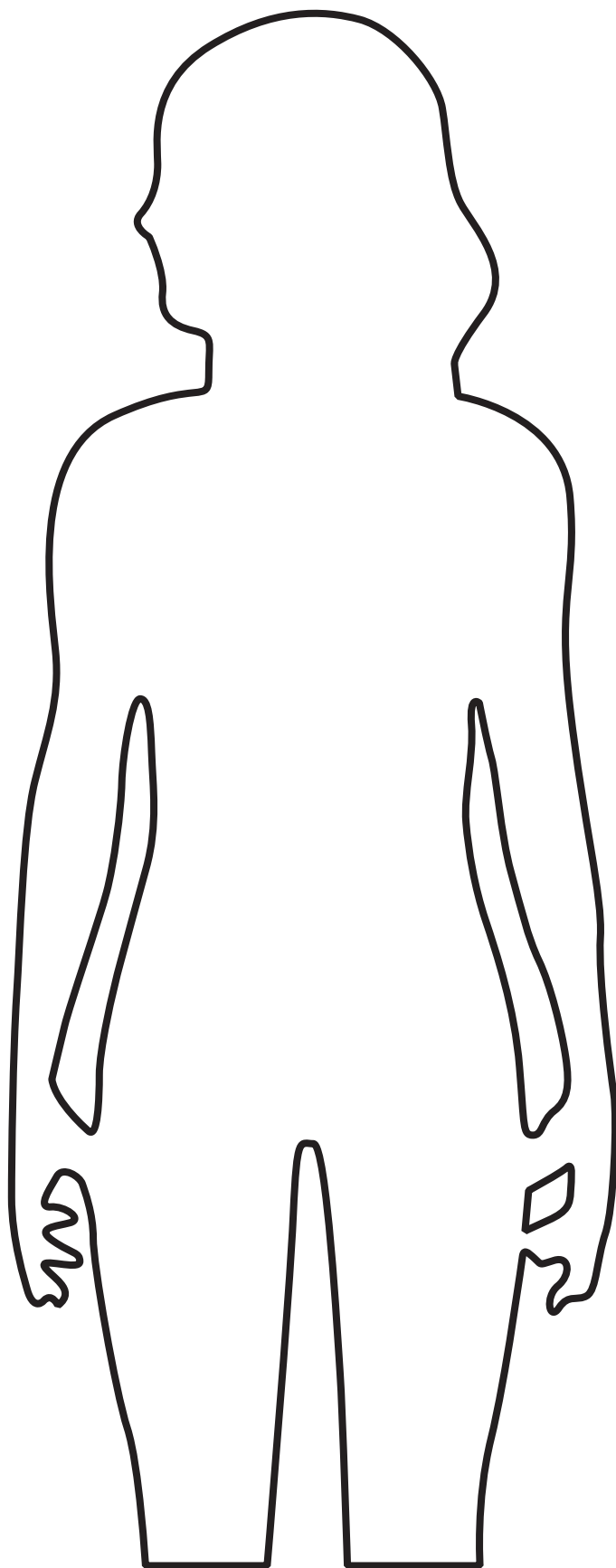
Question 2(c)

FIGURE 3



Question 3(a)

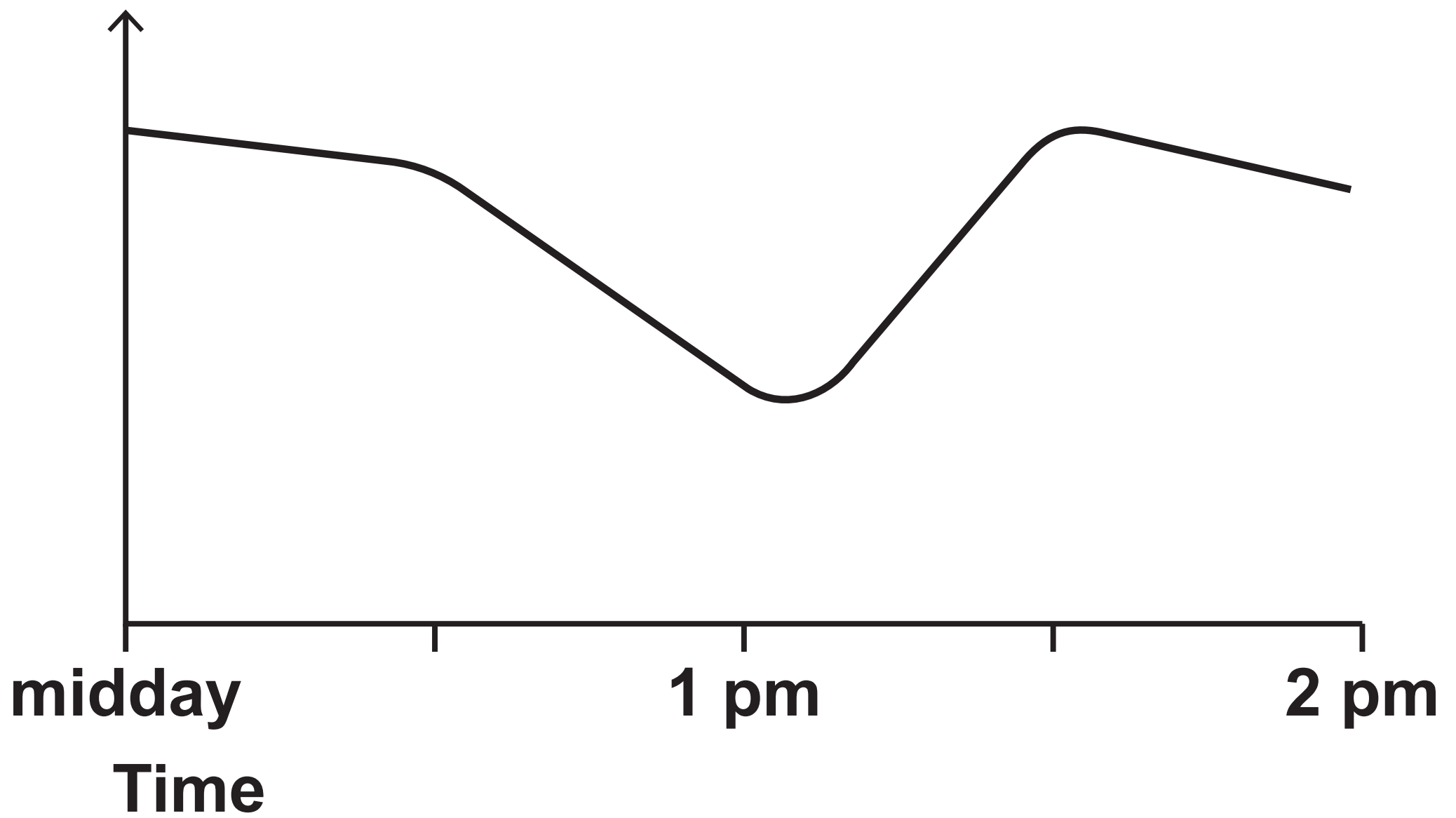
FIGURE 4



Question 3(d)

FIGURE 5

**Blood glucose
concentration in
arbitrary units**



Question 4

FIGURE 6

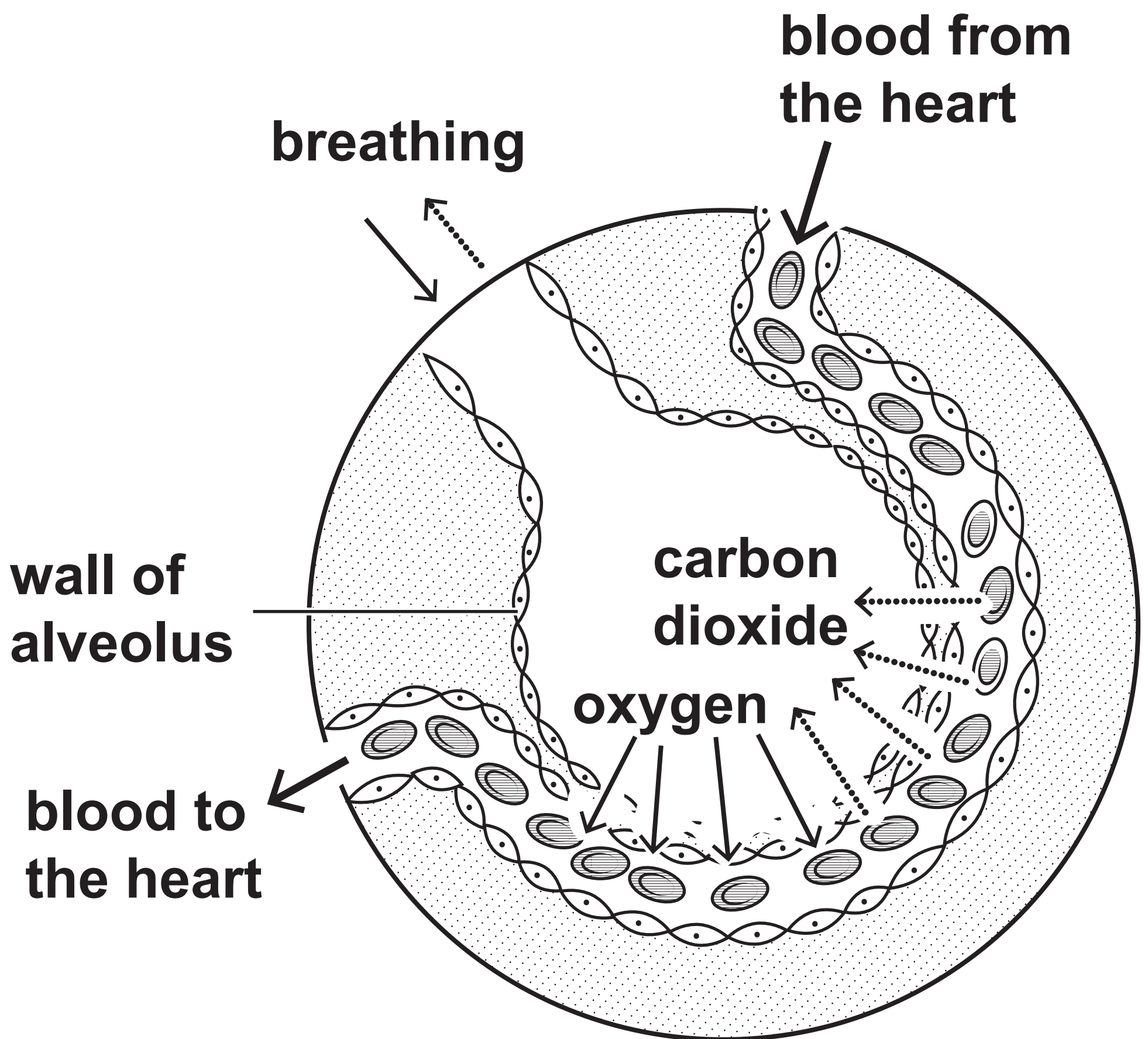
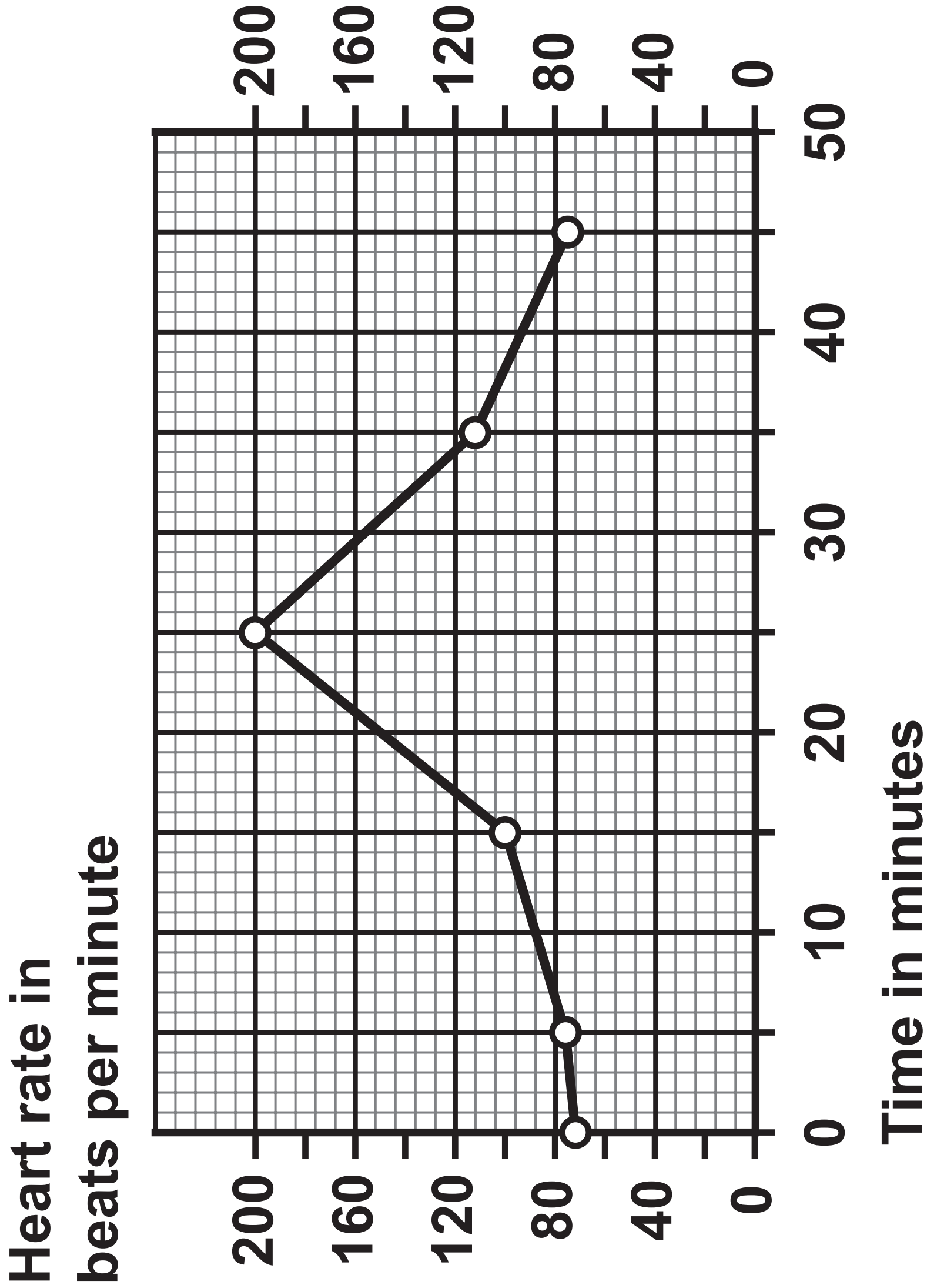
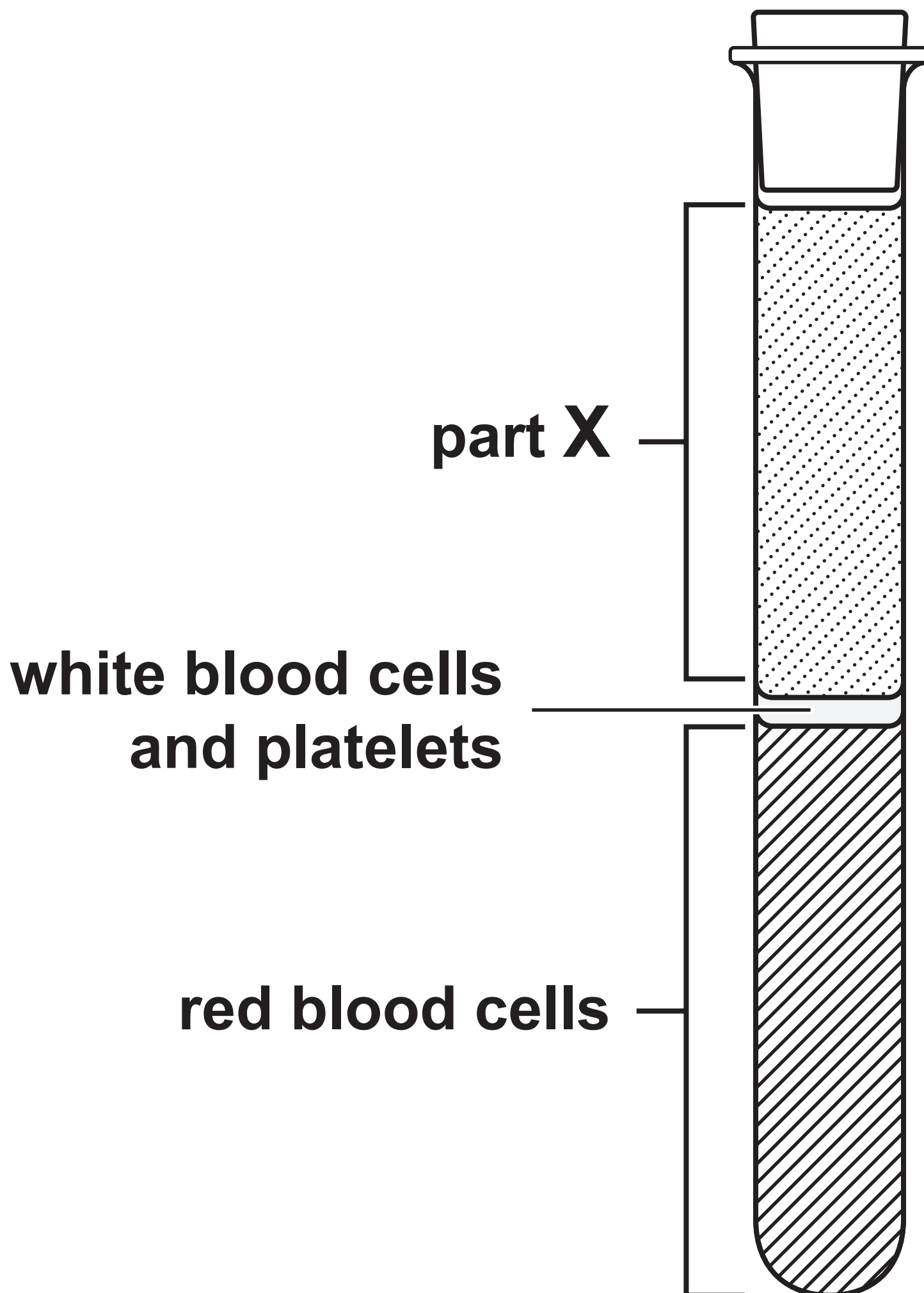


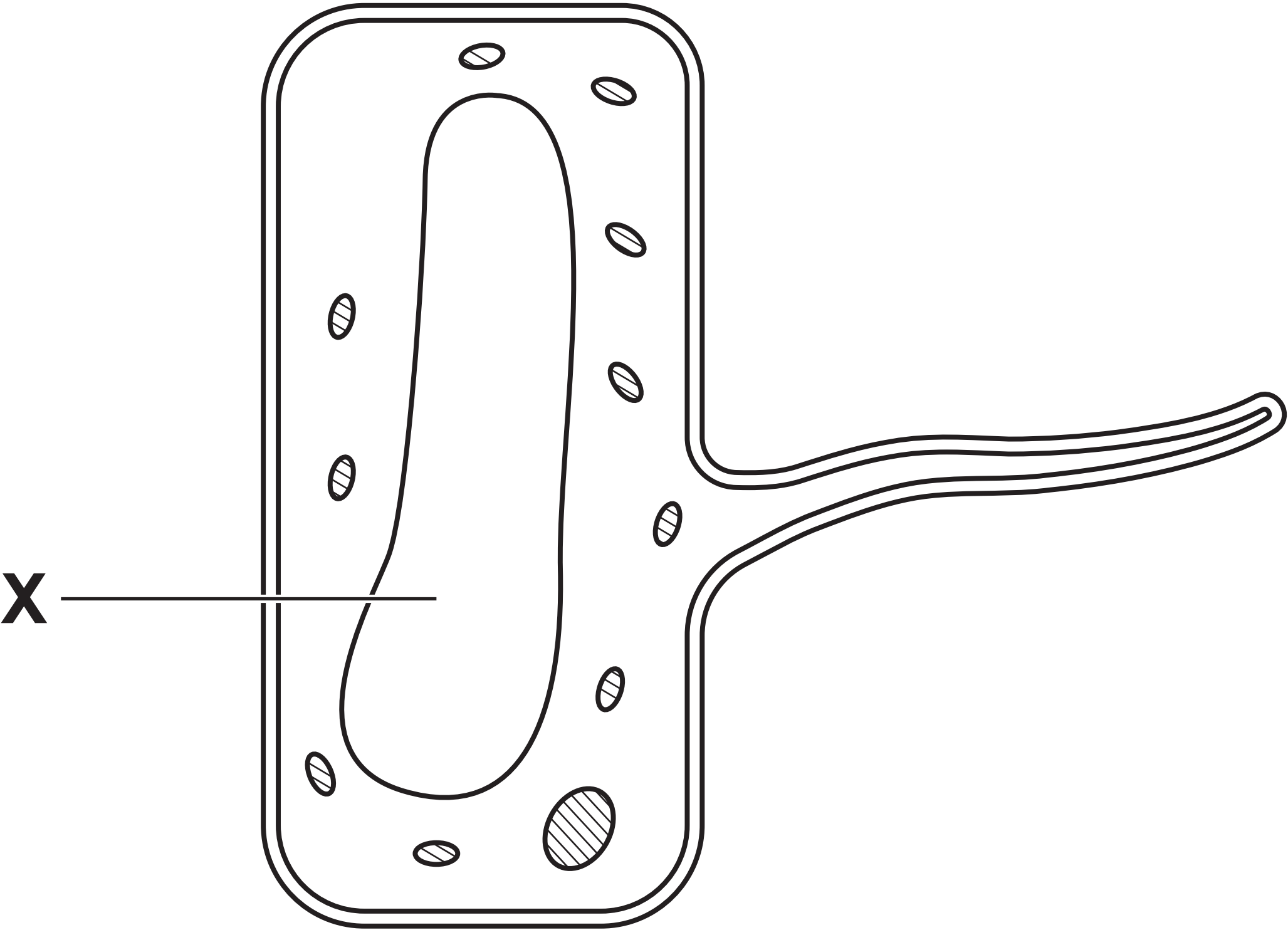
FIGURE 7



Question 5(b)**FIGURE 8**

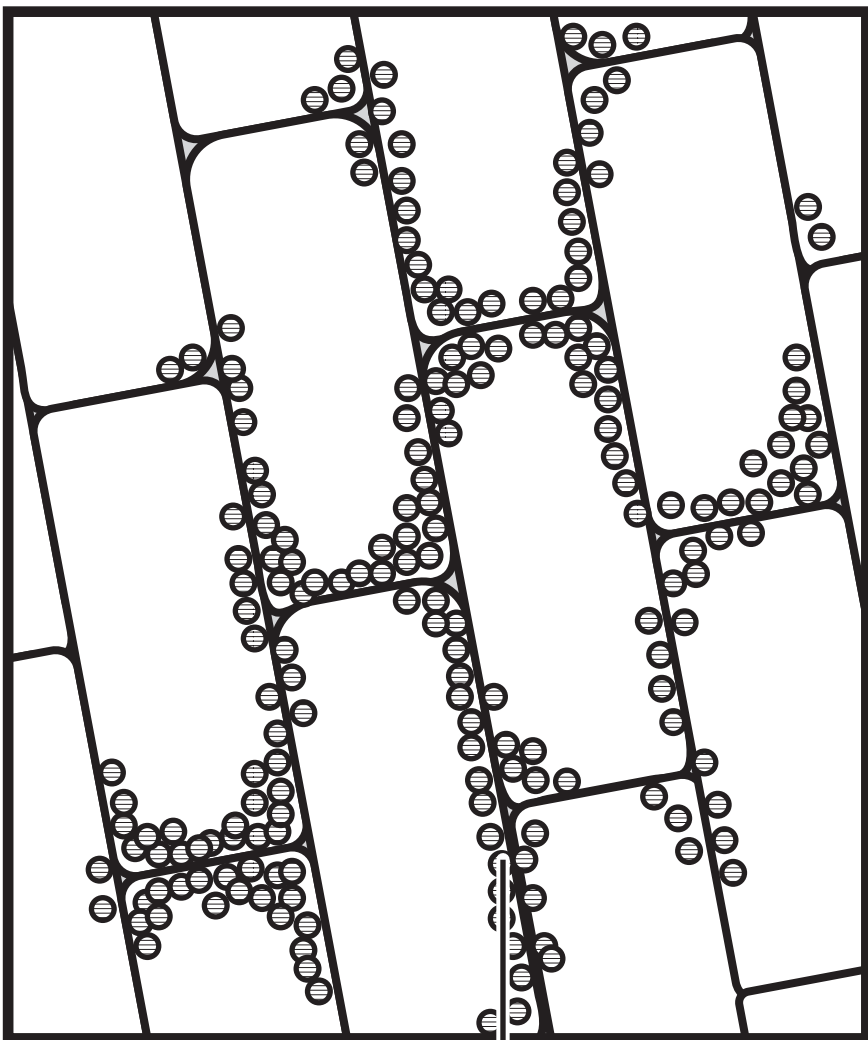
Question 6(a)

FIGURE 9



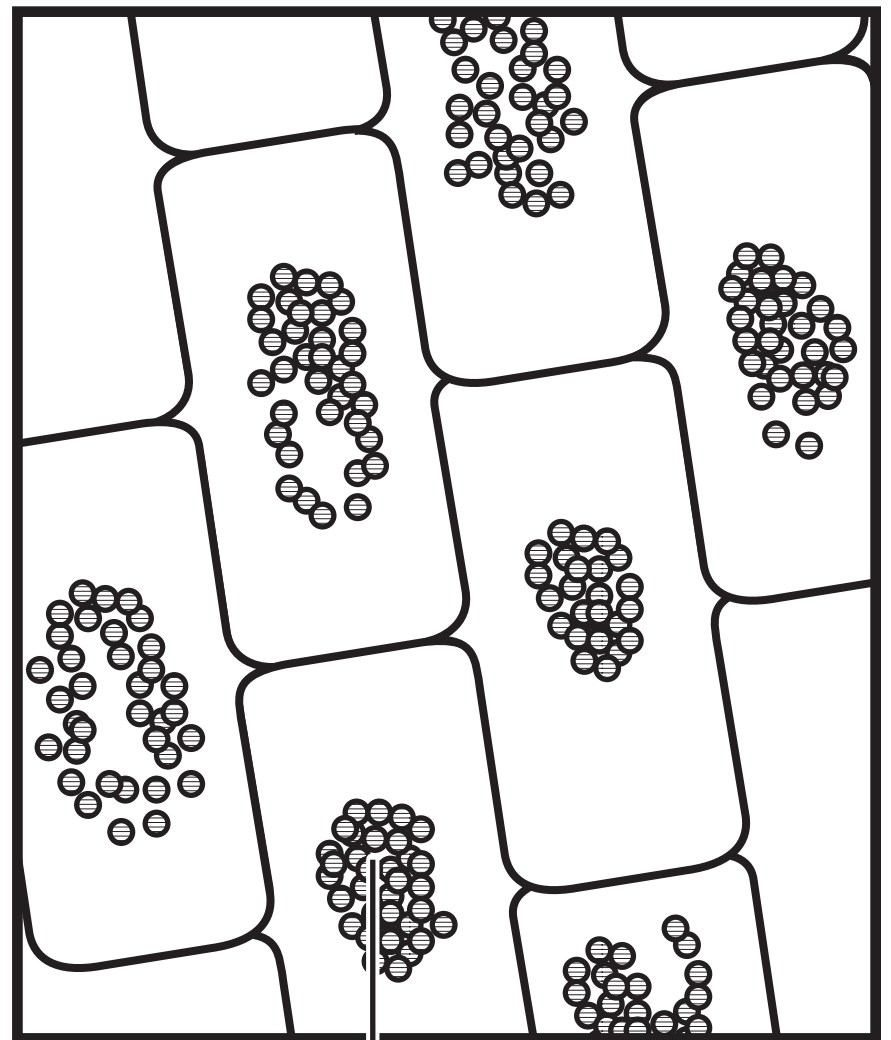
Question 6(b)**FIGURE 10**

**Elodea cells
in tap water**



chloroplasts

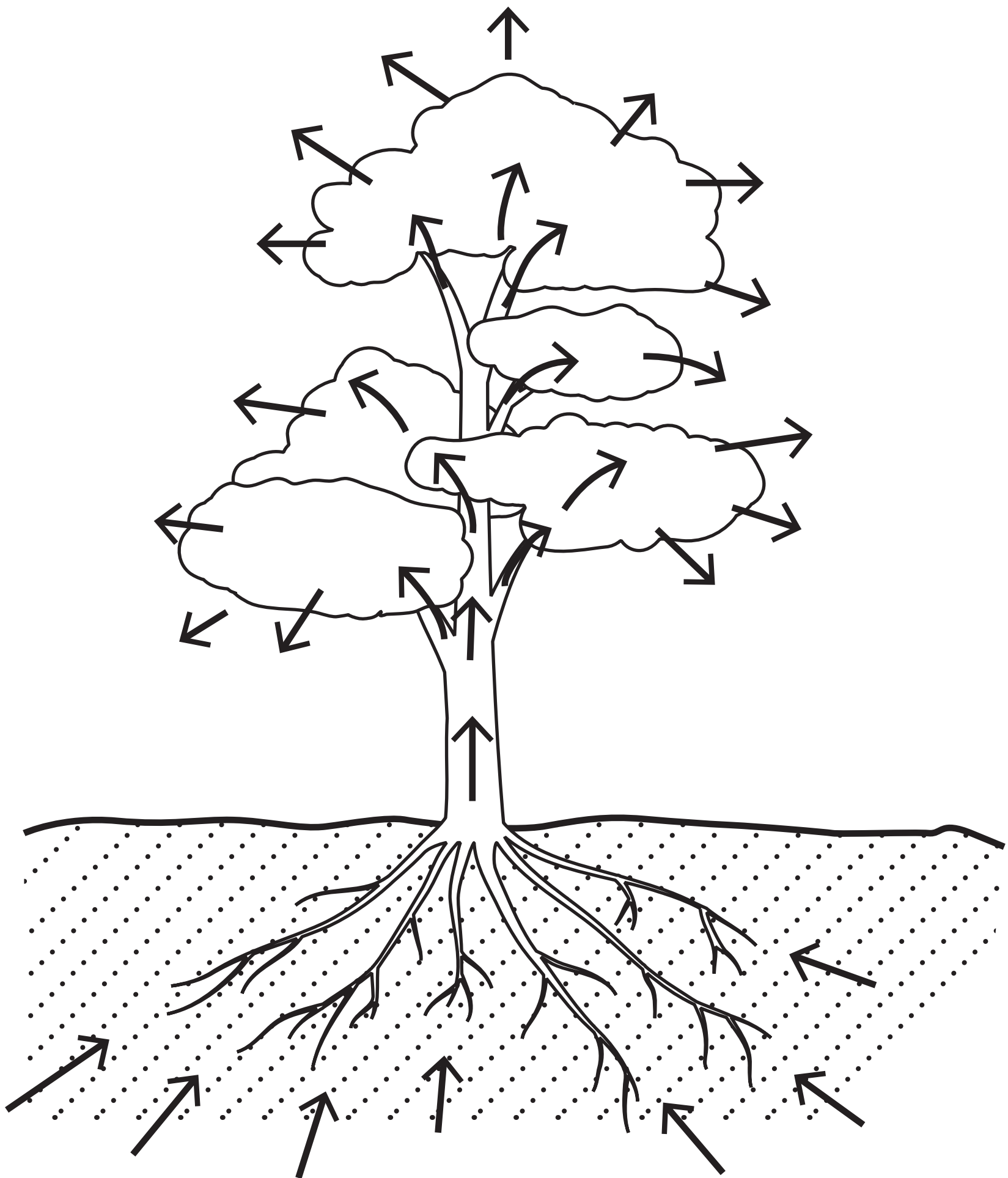
**Elodea cells in
10% salt solution**



chloroplasts

Question 6(c)

FIGURE 11



Question 1(a)

**part of
microscope**

part S

part T

function

● **to stain the cells**

● **to focus the image so
that it is clear**

● **to magnify the image**

● **to hold the slide in place**

● **to provide light to see
the image**

Question 3(a)

FIGURE 4

